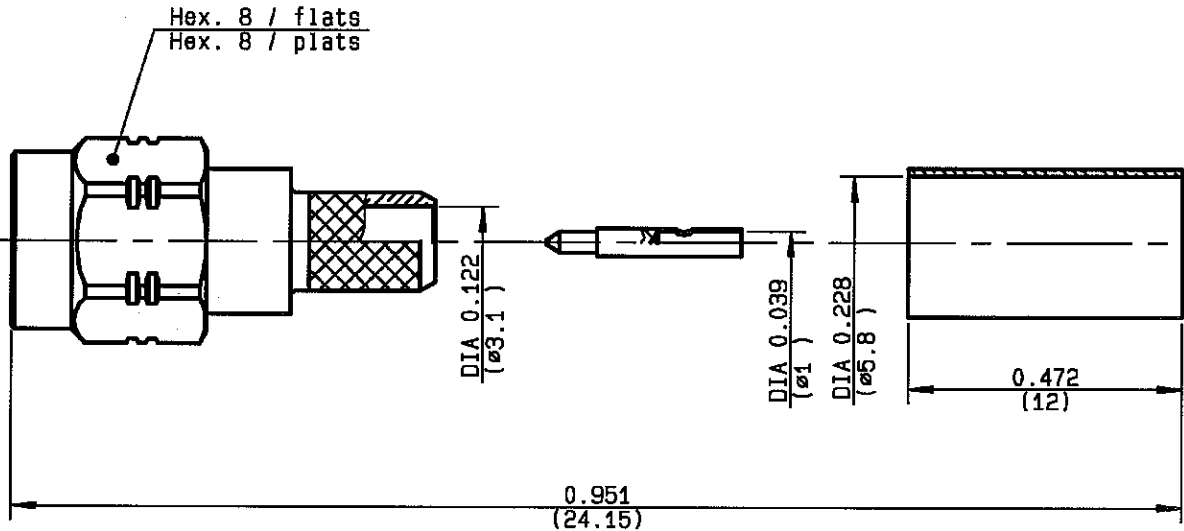


**STRAIGHT PLUG CRIMP TYPE  
CABLE 5/50 D**

**R124.076.123**  
SERIES SMA-COM



NOMINAL IMPEDANCE	<b>50</b> Ω
FREQUENCY RANGE	<b>0-12.4</b> GHz
TEMPERATURE RATING	<b>-65/+165</b> °C
V.S.W.R	<b>1.15 + .01 x F(GHz)Maxi</b>
RF INSERTION LOSS	<b>0.05</b> √F(GHz) dB Maxi
VOLTAGE RATING	<b>335</b> Veff Maxi
DIELECTRIC WITHSTANDING VOLTAGE	<b>1000</b> Veff Mini
INSULATION RESISTANCE	<b>5000</b> MΩMini
HERMETIC SEAL	<b>NA</b> Atm.cm <sup>3</sup> /s
LEAKAGE (pressurized only)	<b>NA</b>
MECHANICAL DURABILITY	<b>100</b> Cycles
WEIGHT	gr
SPECIFICATION	

CABLES : **KX 23**  
**RG 142**  
**RG 142 FTX**  
**RG 223**  
**RG 400**

OTHERS CHARACTERISTICS

CABLE RETENTION	<b>204</b> N Mini
CENTER CONTACT RETENTION	
Axial force - mating end	<b>NA</b> N Mini
Axial force - opposite end	<b>NA</b> N Mini
Torque	<b>NA</b> cm.N Mini
RECOMMENDED TORQUES	
Mating	<b>60</b> cm.N
Panel nut	<b>NA</b> cm.N
Clamp nut	<b>NA</b> cm.N

CONNECTOR PARTS	MATERIALS	FINISH	(all values are given in micrometers)
BODY	BRASS	GOLD 0.2 OVER NICKEL 2	
OUTER CONTACT			
CENTER CONTACT	BRASS	GOLD 1.3 OVER COPPER 2.5	
INSULATOR	PTFE	-	
GASKET		-	
OTHERS PIECES	BRASS	GOLD 0.2 OVER NICKEL 2	

ISSUE  
**0708D**

CREATION DATE  
**30/09/1993**

FILE PART-NUMBER  
**EPC 97-03**



**RADIALL®**

TRIGUES

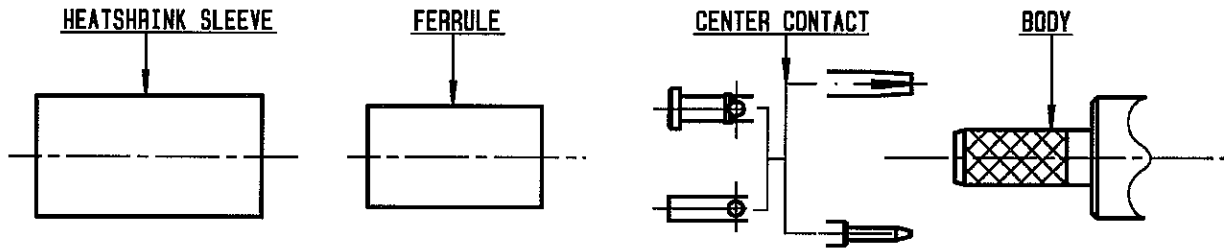
The information given here is subject to change without notice.  
Design changes may be in order to improve the product.

*Connect to the future*



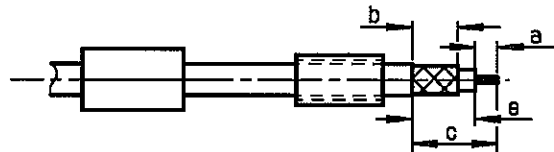
**R124.076.123**

ISSUE **0708D** SERIES **SMA-COM**



①

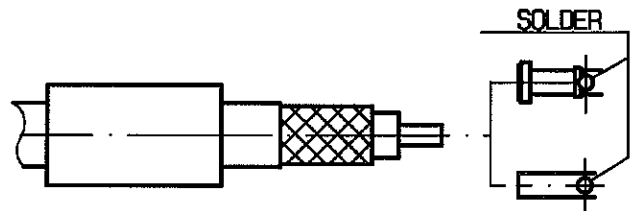
Slide heatshrink sleeve (R280.637.030-Option) and ferrule onto cable. Strip the cable.



Stripping	a	b	c	d	e
inch	0.138	0.276	0.531	0	0.394
mm	3.5	7	13.5		10

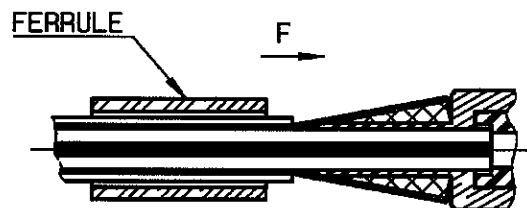
②

Slide center contact on until it bottoms against cable dielectric. Solder center contact.



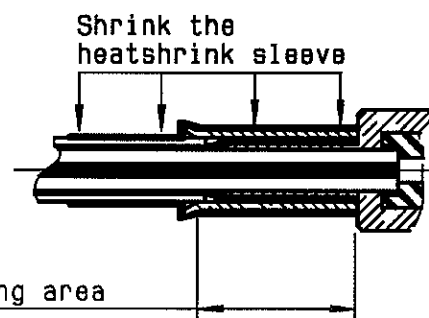
③

Fan the braid. Slide cable into the body by overtaking the insulator hard mounting point. Slide ferrule over the braid. (In direction F)



④

Crimp the ferrule with crimping tool R282.223.000 (Hex. : .213 )(5.41) or crimping tool R282.293.000 ( M22520/5-01 ) + dies R282.235.011 ( M22520/5-11 ) Cut excess of braid if necessary. Slide sleeve over ferrule and heatshrink in place (Option)



Crimping area

TRIQUES